





Annex VI of the Train Driver directive

Autonome Lokomotivführer-Gewerkschaften Europas

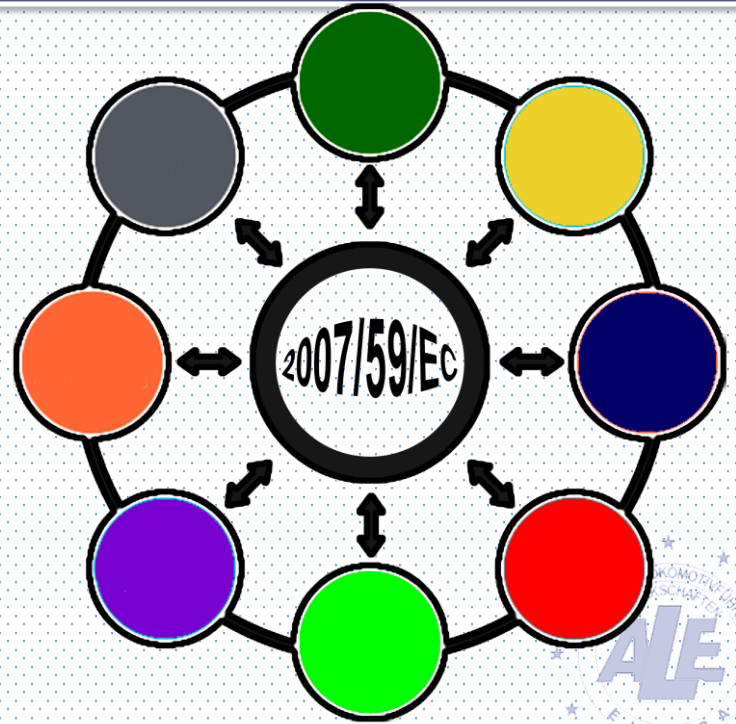
Language Requirements for Cross Border Traffics





Autonome Lokomotivführer-Gewerkschaften Europas

- Looking for the real problem
- Working for the solution
- Apply the solution





Annex VI of the Train Driver directive

Autonome Lokomotivführer-Gewerkschaften Europas

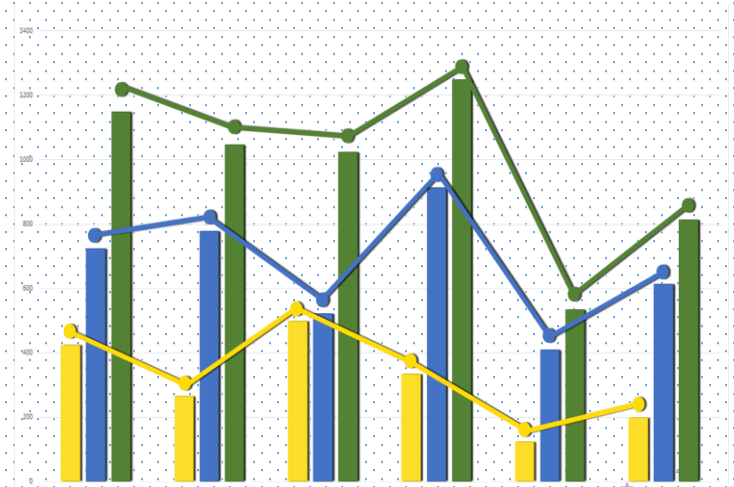
- Language requirements
- Regulation in a common way
- Future trains in Europe operates with the same safety





Autonome Lokomotivführer-Gewerkschaften Europas

- Language requirements:
 - a. Communications in routine
 - b. Degraded situations
 - c. Emergency situations





Annex VI of the Train Driver directive

Autonome Lokomotivführer-Gewerkschaften Europas

- Language requirements:

Communications in routine:

- Train Drivers
- Infrastructure Managers



Autonome Lokomotivführer-Gewerkschaften Europas

- Language requirements:

Degraded situations:

- Train Drivers
- Infrastructure Managers





Annex VI of the Train Driver directive

Autonome Lokomotivführer-Gewerkschaften Europas

- Language requirements:

Emergency situations

- Train Drivers
- Infrastructure Managers
- People outside railway sector





Annex VI of the Train Driver directive

Autonome Lokomotivführer-Gewerkschaften Europas

- Regulation in a common way:
 - a. Communications in routine
 - b. Degraded situations
 - c. Emergency situations



The logo of the Autonomous Union of Railway Drivers of Europe (ALE) is located in the top left corner. It features a blue circular border with yellow stars, similar to the European Union flag. Inside the circle, the text "AUTONOME LOKOMOTIVFÜHRER-GEWERKSCHAFTEN" is written at the top and "EUROPA" at the bottom. In the center, the letters "ALE" are prominently displayed in a stylized, bold font.

Annex VI of the Train Driver directive

Autonome Lokomotivführer-Gewerkschaften Europas

English as a Common Language

96% of students in 2015



Autonome Lokomotivführer-Gewerkschaften Europas

- Regulation in a common way:
 - a. Communications in routine
 - b. Degraded situations
 - c. **Emergency situations**





Autonome Lokomotivführer-Gewerkschaften Europas

- Regulation in a common way:

Emergency situations

- **Train Drivers**
- **Infrastructure Managers**
- **People outside railway sector**
(They don't use glossary of key commands)





Autonome Lokomotivführer-Gewerkschaften Europas

- Regulation in a common way:

Emergency situations

- **Train Drivers**
- **Infrastructure Managers**
- **People outside railway sector**
(They don't use glossary of key commands)





Annex VI of the Train Driver directive

Autonome Lokomotivführer-Gewerkschaften Europas

Example: (Spain)

2 Crossing borders Traffics

- Spain – Portugal (B1 Level Portuguese)
- Spain – France (B1 Level French)





Annex VI of the Train Driver directive

Autonome Lokomotivführer-Gewerkschaften Europas

Example: (Spain)

1 International Project in Saudi Arabia

All the companies involved works in English





Annex VI of the Train Driver directive

Autonome Lokomotivführer-Gewerkschaften Europas

Comparing with other sectors:

1 single accident or emergency situation could cost all the budget for 1 year.

The Company will die





Annex VI of the Train Driver directive

Autonome Lokomotivführer-Gewerkschaften Europas

**THANKS FOR YOUR
ATTENTION**

